

# Japan Mint Catalog 2014

## 1. Japan 47 Prefectures Coin Program

## 2. Coin Sets

## 3. Metallic Art Objects

**Important :** ■ This catalog will be valid until June 30, 2014.

- We may not be able to sell the items in this catalog, or need some time for additional production, depending on the inventory.
- Prices in this catalog do not include shipping and insurance charges, and are subject to change without notice.



*Japan Mint*

**Overseas Sales Group, Japan Mint**

Address: 1-1-79, Tenma, Kita-ku, Osaka

Phone: +81-6-6531-5087 E-mail: [overseas@mint.go.jp](mailto:overseas@mint.go.jp)

Fax: +81-6-6351-6608 Website: [www.mint.go.jp/eng](http://www.mint.go.jp/eng)

# 500-yen Bicolor Clad Coins (2010)

Japan 47 Prefectures  
Coin Program

## 1 12th Aomori (2010)



### Unit Price: JPY 952

Obverse design: *Sannai-Maruyama Site and Clay Figurine*

Scheduled Sales Quantity: 138,000 sets

[Click here to learn more about this item.](#)

## 2 13th Saga (2010)



### Unit Price: JPY 952

Obverse design: *Okuma Shigenobu, Saga Nishiki and Kashima Nishiki*

Scheduled Sales Quantity: 138,000 sets

[Click here to learn more about this item.](#)

## "Japan 47 Prefectures Coin Program" 500-yen Bicolor Clad Coins

### Common Specifications for 500-yen Bicolor Clad Coins

Composition: Copper 75 %, Zinc 12.5 %, Nickel 12.5%

Quality: Brilliant Uncirculated

Diameter: 26.5 mm

Weight: 7.1g

Edge: Helical Ridges with two different pitches

Packaging: Plastic Card Case

Reverse design: Shape of Japanese old coin - Kanji letters meaning "local autonomy"

(Latent image technology is applied to the center of the shape of Japanese old coin to make letters of "47" representing the number of prefectures in Japan, and "60" representing the 60th Anniversary of Enforcement of the Local Autonomy Law appear alternately when viewed from different angles.)



Common Reverse

### Issue List

- |                       |                             |                                |
|-----------------------|-----------------------------|--------------------------------|
| - 1st Hokkaido (2008) | - <u>12th Aomori (2010)</u> | - <u>23rd Tochigi (2012)</u>   |
| - 2nd Kyoto (2008)    | - <u>13th Saga (2010)</u>   | - <u>24th Oita (2012)</u>      |
| - 3rd Shimane (2008)  | - 14th Toyama (2011)        | - <u>25th Hyogo (2012)</u>     |
| - 4th Nagano (2009)   | - 15th Tottori (2011)       | - <u>26th Miyagi (2013)</u>    |
| - 5th Niigata (2009)  | - 16th Kumamoto (2011)      | - <u>27th Hiroshima (2013)</u> |
| - 6th Ibaraki (2009)  | - 17th Shiga (2011)         | - <u>28th Gunma (2013)</u>     |
| - 7th Nara (2009)     | - 18th Iwate (2011)         | - <u>29th Okayama (2013)</u>   |
| - 8th Kochi (2010)    | - <u>19th Akita (2011)</u>  | - <u>30th Shizuoka (2013)</u>  |
| - 9th Gifu (2010)     | - 20th Okinawa (2012)       | - <u>31st Yamanashi (2013)</u> |
| - 10th Fukui (2010)   | - 21st Kanagawa (2012)      | - <u>32nd Kagoshima (2013)</u> |
| - 11th Aichi (2010)   | - 22nd Miyazaki (2012)      |                                |

\*Underlined coins are still available from us as of May, 2014 .

[Click here to learn more about the "Japan 47 Prefectures Coin Program."](#)

# 500-yen Bicolor Clad Coins (2011-12)

Japan 47 Prefectures  
Coin Program

## 3 19th Akita (2011)



**Unit Price: JPY 952**

Obverse design: *Nobu Shirase and Kanto Festival*

Scheduled Sales Quantity: 116,000 sets

[Click here to learn more about this item.](#)

## 4 23rd Tochigi (2012)



**Unit Price: JPY 952**

Obverse design: *Sleeping Cat and Sparrows*

Scheduled Sales Quantity: 116,000 sets

[Click here to learn more about this item.](#)

## 5 24th Oita (2012)



**Unit Price: JPY 952**

Obverse design: *Usuki Stone Buddha*

Scheduled Sales Quantity: 116,000 sets

[Click here to learn more about this item.](#)

## 6 25th Hyogo (2012)



**Unit Price: JPY 952**

Obverse design: *Oriental white storks*

Scheduled Sales Quantity: 114,000 sets

[Click here to learn more about this item.](#)



# 500-yen Bicolor Clad Coins (2013)

Japan 47 Prefectures  
Coin Program

## 7 26th Miyagi (2013)



**Unit Price: JPY 952**

Obverse design: *Sendai Tanabata Festival*

Scheduled Sales Quantity: 115,000 sets

[Click here to learn more about this item.](#)

## 9 28th Gunma (2013)



**Unit Price: JPY 952**

Obverse design: *Female Worker and the keystone of the East Cocoon Warehouse, Tomioka Silk Mill*

Scheduled Sales Quantity: 119,000 sets

[Click here to learn more about this item.](#)

## 8 27th Hiroshima (2013)



**Unit Price: JPY 952**

Obverse design: *Atomic Bomb Dome and Memorial Monument for Hiroshima, City of Peace*

Scheduled Sales Quantity: 121,000 sets

[Click here to learn more about this item.](#)

## 10 29th Okayama (2013)



**Unit Price: JPY 952**

Obverse design: *Okayama Korakuen Garden*

Scheduled Sales Quantity: 110,000 sets

[Click here to learn more about this item.](#)

# 500-yen Bicolor Clad Coins (2013)

Japan 47 Prefectures  
Coin Program

## 11 30th Shizuoka (2013)



**Mt. Fuji, a UNESCO World Cultural Heritage**

**Unit Price: JPY 952**

Obverse design: *Fujisan and tea plantaion*

Scheduled Sales Quantity: 108,000 sets

[Click here to learn more about this item.](#)

## 12 31st Yamanashi (2013)



**Mt. Fuji, a UNESCO World Cultural Heritage**

**Unit Price: JPY 952**

Obverse design: *Fujisan and grapes*

Scheduled Sales Quantity: 112,000 sets

[Click here to learn more about this item.](#)

## 13 32nd Kagoshima (2013)



**Unit Price: JPY 952**

Obverse design: *Mt. Sakurajima*

Scheduled Sales Quantity: 108,000 sets

[Click here to learn more about this item.](#)

## 14 2013 Seven Coins BU Set (Miyagi, Hiroshima, Gunma, Okayama, Shizuoka, Yamanashi and Kagoshima)



**Unit Price: JPY 4,857**

Scheduled Sales Quantity: 60,000 sets

[Click here to learn more about this item.](#)

# Coin Sets

## 2014 Annual Coin Sets

### 15 2014 Mint Set



**Unit Price: JPY 1,619**

Scheduled Sales Quantity: 145,000 sets

[Click here to learn more about this item.](#)

### 16 2014 Japan Coin Set



**Unit Price: JPY 1,810**

Scheduled Sales Quantity: Not fixed

[Click here to learn more about this item.](#)

### 17 2014 Anniversary Coin Set



**Unit Price: JPY 1,905**

Scheduled Sales Quantity: Not fixed

[Click here to learn more about this item.](#)

### 18 2014 Standard Proof Coin Set



**Unit Price: JPY 7,703**

Scheduled Sales Quantity: 36,000 sets

[Click here to learn more about this item.](#)

### 19 2014 Cherry Blossom Viewing BU Coin Set



**Unit Price: JPY 1,713**

Scheduled Sales Quantity: 60,000 sets

[Click here to learn more about this item.](#)

### 20 2014 Cherry Blossom Viewing PROOF Coin Set



**Unit Price: JPY 12,941**

Scheduled Sales Quantity: 16,000 sets

[Click here to learn more about this item.](#)



# Metallic Art Objects

## Copper Medallions

### 21 Copper Medallion "Golden Pavilion"



**Unit Price: JPY 9,260**

Material: Copper Alloy    Finish: Factory Tarnish Finish

Diameter: 70mm    Weight: 175g

[Click here to learn more about this item.](#)

### 22 Copper Medallion "Osaka Castle"



**Unit Price: JPY 12,686**

Material: Copper Alloy    Finish: Factory Tarnish Finish

Diameter: 70mm    Weight: 235g

[Click here to learn more about this item.](#)

### 23 Copper Medallion "Old Man Noh Mask"



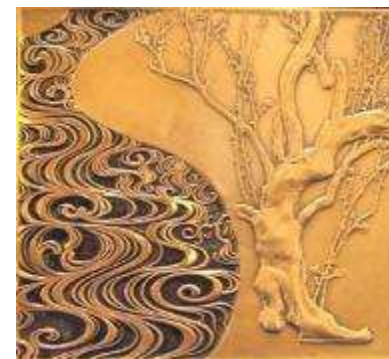
**Unit Price: JPY 10,556**

Material: Copper Alloy    Finish: Factory Tarnish Finish

Size: 70mm x 51mm    Weight: 177g

[Click here to learn more about this item.](#)

### 24 Copper Medallion "Red Plum Tree"



**Unit Price: JPY 12,038**

Material: Copper Alloy    Finish: Factory Tarnish Finish

Size: 64mm x 70mm    Weight: 195g

[Click here to learn more about this item.](#)

# Metallic Art Objects

## Paperweights

### 25 Copper Paperweight “Crane and Tortoise”



**Unit Price: JPY 5,371**

Material: Copper Alloy    Finish: Factory Tarnish Finish  
Diameter: 46mm    Weight: 45g

[Click here to learn more about this item.](#)

### 26 Copper Paperweight “Butterflies”



**Unit Price: JPY 6,482**

Material: Copper Alloy    Finish: Factory Tarnish Finish  
Diameter: 68mm    Weight: 138g

[Click here to learn more about this item.](#)

### 27 Copper Paperweight “Isle of Eternal Youth”



**Unit Price: JPY 7,778**

Material: Copper Alloy    Finish: Factory Tarnish Finish  
Diameter: 68mm    Weight: 138g

[Click here to learn more about this item.](#)

### 28 Copper Paperweight “Pair of Dragons”



**Unit Price: JPY 7,778**

Material: Copper Alloy    Finish: Factory Tarnish Finish  
Diameter: 68mm    Weight: 138g

[Click here to learn more about this item.](#)

### 29 Bimetal Paperweight “Pair of Mandarin Ducks”



**Unit Price: JPY 31,112**

Material: Bimetal (Pure Silver / Copper Alloy)    Finish: Rough Finish  
Diameter (Inner / Outer part): 40mm / 68mm    Weight: 157g

[Click here to learn more about this item.](#)



# Metallic Art Objects

## Electrotype Plaques & Cloisonné Silver Medallion

### 30 Electrotype Plaque “Golden Pavilion”



**Unit Price: JPY 88,612**

Material: Copper Alloy    Finish: Oxidized Gold and Silver Finish

Frame Size: 450mm x 450mm    Weight: 3,170g

[Click here to learn more about this item.](#)

### 31 Electrotype Plaque “Persimmon Fruit”



**Unit Price: JPY 22,038**

Material: Copper Alloy    Finish: Factory Tarnish Finish

Frame Size: 345mm x 415mm    Weight: 1,250g

[Click here to learn more about this item.](#)

### 32 Cloisonné Silver Medallion “Sendai Tanabata Festival”



Obverse

Reverse



Obverse

Reverse

#### Specifications

Material: Pure Silver

Finishing: Cloisonné enameled

/ Gold plating

Diameter: 60mm

Weight: Approx. 160g

Packaging: Lacquered Wooden  
Presentation Box

\*Only one medallion is included.

**Unit Price: JPY 121,945**

Scheduled Sales Quantity: 500 pieces

[Click here to learn more about this item.](#)

# Metallic Art Objects

## National Treasure Medallion Series

### 33 Silver Medallion “Byōdōin Temple”



Obverse

Reverse

**Unit Price: JPY 24,630**

Scheduled Sales Quantity: 3,000 pieces

[Click here to learn more about this item.](#)



Obverse

Reverse

#### Common Specifications for National Treasure Medallion Series

Material: Pure Silver

Finishing of Obverse: Oxidized Silver Finish

Diameter: 60mm

Weight:

[30] “Byōdōin Temple,”

[32] “Himeji Castle,”

[33] “Kongōbuji Temple, Mt. Kōya,”

[34] “Itsukushima Shintō Shrine,”

[35] “Kohfukuji Temple”

[36] “Nikkō Tōshōgū Shrine”

[31] “Hyoryuji Temple” : Approx. 155g

Approx.  
160g

Packaging: Special Presentation Box

\*Designs and colors of the display cases are different for each product.

\*Only one medallion is included.

### 34 Silver Medallion “Hōryūji Temple”



Obverse

Reverse

**Unit Price: JPY 24,630**

Scheduled Sales Quantity: 3,000 pieces

[Click here to learn more about this item.](#)

### 35 Silver Medallion “Himeji Castle”



Obverse

Reverse

**Unit Price: JPY 24,630**

Scheduled Sales Quantity: 5,000 pieces

[Click here to learn more about this item.](#)

# Metallic Art Objects

## National Treasure Medallion Series

### 36 Silver Medallion “Itsukushima Shintō Shrine”



Obverse



Reverse

**Unit Price: JPY 24,630**

Scheduled Sales Quantity: 4,000 pieces

[Click here to learn more about this item.](#)

### 37 Silver Medallion “Kongōbuji Temple, Mt. Kōya”



Obverse



Reverse

**Unit Price: JPY 24,630**

Scheduled Sales Quantity: 3,000 pieces

[Click here to learn more about this item.](#)

### 38 Silver Medallion “Kohfukuji Temple”



Obverse



Reverse

**Unit Price: JPY 24,630**

Scheduled Sales Quantity: 3,000 pieces

[Click here to learn more about this item.](#)

### 39 Silver Medallion “Nikkō Tōshōgū Shrine”



Obverse



Reverse

**Unit Price: JPY 24,630**

Scheduled Sales Quantity: 3,000 pieces

[Click here to learn more about this item.](#)



# Metallic Art Objects

## Cherry Blossom Viewing Medals

### 40 2013 Cherry Blossom Viewing Silver Medal



Obverse

Reverse

#### Packaging



Obverse

Reverse

**Unit Price: JPY 21,019**

Scheduled Sales Quantity: 2,000 pieces

[Click here to learn more about this item.](#)

### 41 2014 Cherry Blossom Viewing Silver Medal

**NEW**



Obverse

Reverse

**Unit Price: JPY 18,519**

Scheduled Sales Quantity: 2,000 pieces

[Click here to learn more about this item.](#) (\*Only in Japanese)

#### Common Specifications of Silver Medals

Material: Pure Silver

Finishing: Oxidized Silver Finish

Diameter: 55mm

Weight: Approx. 135g

Packaging: Special Presentation Box

\*Only one medallion is included.

### 42 2014 Cherry Blossom Viewing Red-brass Medal

**NEW**



Obverse

Reverse

#### Specifications of a Red-brass Medal

Material: Red-brass

Finishing: Factory Tarnish Finish

Diameter: 55mm

Weight: Approx. 110g

Packaging: Special Presentation Box

\*Only one medallion is included.

**Unit Price: JPY 4,815**

Scheduled Sales Quantity: 3,000 pieces

[Click here to learn more about this item.](#) (\*Only in Japanese)

#### Method of Order Placement

Online Shop of the Japan Mint is available for customers living in *South Korea, Hong Kong, Macau, United States, Australia, Czech, Denmark, Finland, France, Poland, and Portugal*. Some of the items in this catalog can be purchased at the Online Shop.

If your country is not included in the above, or you cannot find the items in this catalog at the Online Shop, you can also order by e-mail. Please let us know which item you would like to purchase as well as your home address and phone number by e-mail to [overseas@mint.go.jp](mailto:overseas@mint.go.jp).



#### Overseas Sales Group, Japan Mint

Address: 1-1-79, Tenma, Kita-ku, Osaka

Phone: +81-6-6531-5087

Fax: +81-6-6351-6608

E-mail: [overseas@mint.go.jp](mailto:overseas@mint.go.jp)

Website: [www.mint.go.jp/eng](http://www.mint.go.jp/eng)